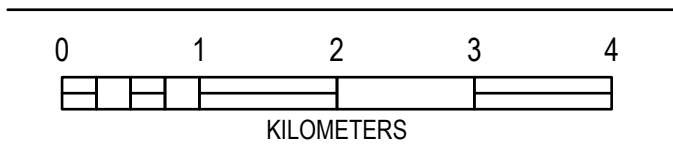
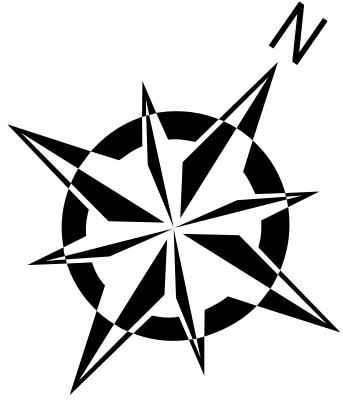




Township of
SEVERN



SCALE: 1:55,000



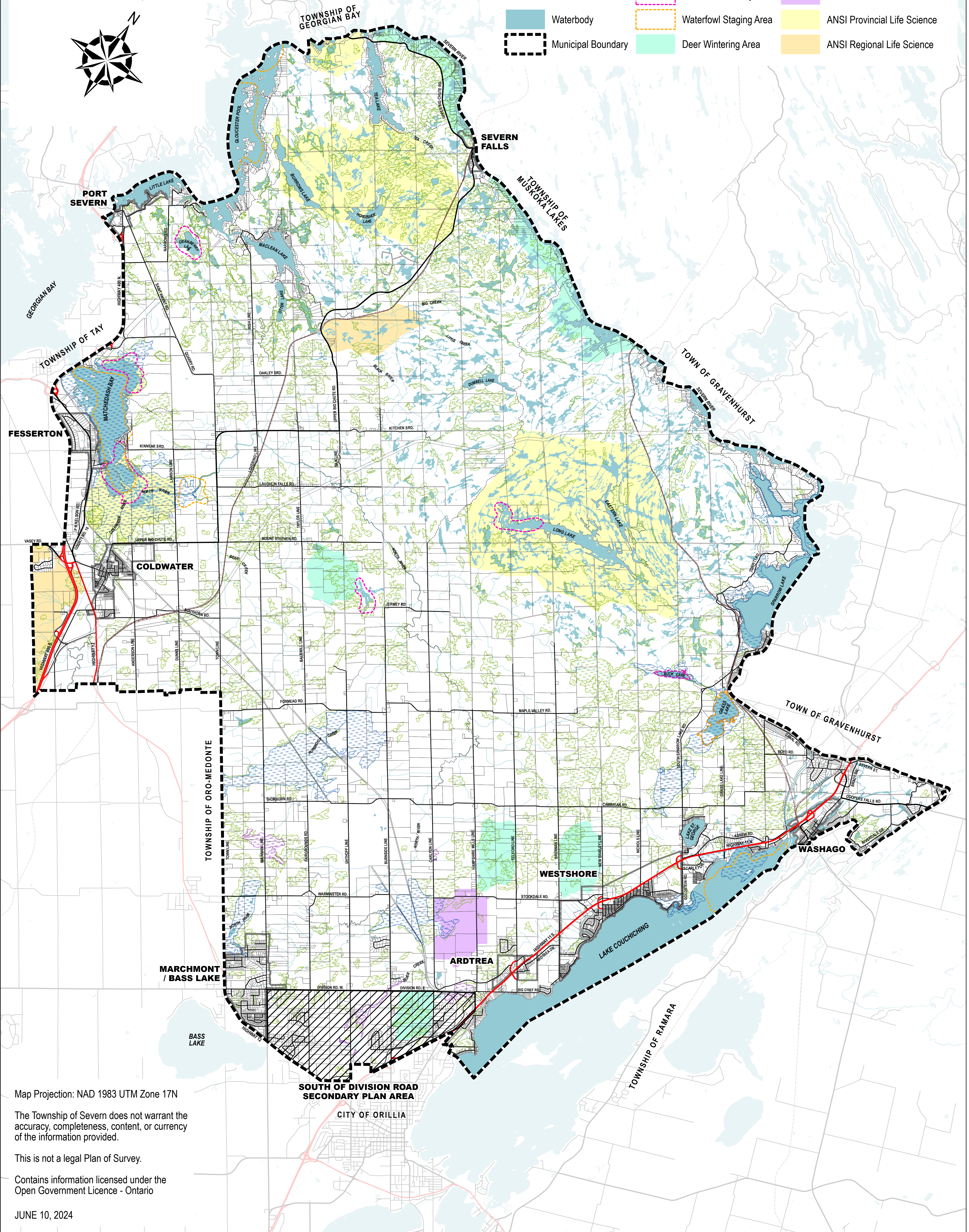
TOWNSHIP OF SEVERN

OFFICIAL PLAN | SCHEDULE D

NATURAL HERITAGE FEATURES

LEGEND

	Highway		County Road		Local Road		Private Road		Railway		Watercourse		Waterbody		Municipal Boundary		Settlement Area		Secondary Plan Area		Parcel Fabric		Provincially Significant Wetland		Evaluated Wetland		Wetland >2ha		ANSI Provincial Earth Science		ANSI Provincial Life Science		ANSI Regional Life Science
--	---------	--	-------------	--	------------	--	--------------	--	---------	--	-------------	--	-----------	--	--------------------	--	-----------------	--	---------------------	--	---------------	--	----------------------------------	--	-------------------	--	--------------	--	-------------------------------	--	------------------------------	--	----------------------------



Map Projection: NAD 1983 UTM Zone 17N

The Township of Severn does not warrant the accuracy, completeness, content, or currency of the information provided.

This is not a legal Plan of Survey.

Contains information licensed under the Open Government Licence - Ontario

JUNE 10, 2024